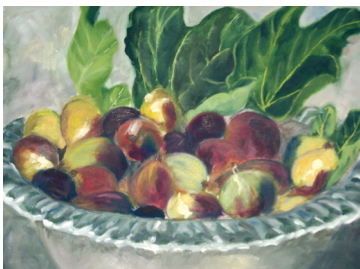


355	EDITOR'S COMMENT
357	GUEST EDITORIAL
	MAIN ARTICLES
359	Brachialgia: Cervical radiculopathy and differential diagnosis <i>R Dunn</i>
364	Common elbow conditions <i>B C Vrettos and S J L Roche</i>
370	Shoulder instability <i>B C Vrettos and S J L Roche</i>
	MORE ABOUT...ORTHOPAEDIC SURGERY
373	Clearing the cervical spine <i>R Dunn</i>
374	Radiological pitfalls in hand injuries <i>M Solomons</i>
376	Hand immobilisation and rehabilitation <i>M Solomons</i>
377	Wrist pain <i>M Solomons</i>
378	Common hand conditions <i>M Solomons</i>
380	Current concepts in rotator cuff management <i>B C Vrettos and S J L Roche</i>
381	Testing for elbow instability <i>B C Vrettos and S J L Roche</i>
383	ABSTRACTS
385	AIDS BRIEF
386	NEWS BITES
389	PROFESSIONAL ADVERTISING
392	CPD QUESTIONNAIRE

FICUS CARICA



Caro Nel dedicated this painting to the memory of a great human being, Dr Nathan Cirotta, a general surgeon who recently died of pancreatic cancer – a 'mensch' whom she misses terribly.

The appearance of advertising in SA Medical Association publications is neither a guarantee nor an endorsement of the products or the claims made about the products by the manufacturer.

Subscription rates:
Annual R852.00
Outside R1920.00
Single copies R85.00
Students – on application



Guest Editor

JOHAN WALTERS
MB ChB, FC ORTH (SA)

Editor

BRIDGET FARHAM
BSc (Hons), PhD, MB ChB

Technical Editors

MARIJKE MAREE
PAULA VAN DER BIJL

Manuscript Co-ordinator
ELSA LAMPROPOULOS

**Head: Health and
Medical Publishing**
ROBERT ARENDSE

Production Manager
EMMA COUZENS

Professional Advertising
LISA REID
Tel. (012) 481-2082

Art Director
SIOBHAN TILLEMANS

DTP/Layout & Setting
TRAVIS ARENDSE

Online Manager
GERTRUDE FANI

Distribution Manager
EDWARD MACDONALD

Sales and Marketing Director
DIANE SMITH
Tel. (012) 481-2069
E-mail: dianes@samedical.org

Sales Manager
AZAD YUSUF
Tel. (012) 681-7202
E-mail: azad@hmpg.co.za

Sales Team
LISA REID, KEITH HILL,
ANDREW CROSS,
SALIE PETERSEN, MARIE
VENTER,
JACQUELINE HERBST,
TERSIA COETZEE,
ANDRE MYBURGH

CME Editorial Board

Dr N Mabasa
Dr N Lee
Dr B Schweitzer
Prof. J Seggie
Prof. J P van Niekerk
Dr H S van Riet

ISSN 0256-2170

©Copyright: The South African
Medical Association, Health
and Medical Publishing Group.

Use of editorial material is subject to the Creative Commons Attribution – Noncommercial Works License.

<http://creativecommons.org/licenses/by-nc/3.0/>

Printed by Creda Communications
Pty Ltd

